

**Crosby**

# Swivel Hoist Ring



**HR-125M**  
Swivel Hoist Ring

Color coded to distinguish between UNC (Red) and Metric (Silver) thread types.



**HR-125**  
Swivel Hoist Ring

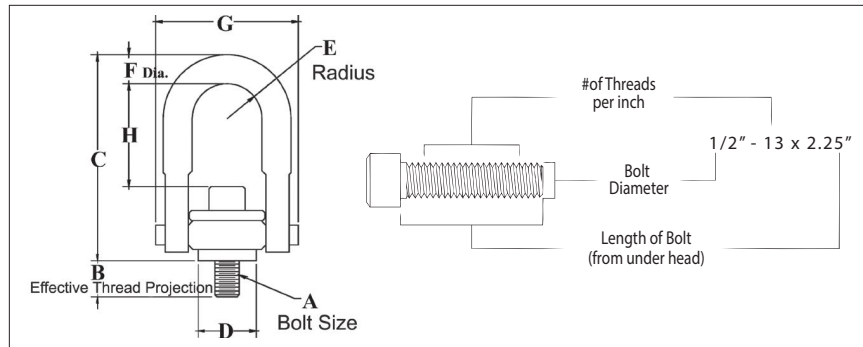
- Available in UNC and Metric thread sizes.
- UNC threads available in sizes from 800 pounds to 100,000 pounds Working Load Limit, with a design factor of 5 to 1.
- Metric threads available in sizes from 400kg to 16,900kg and dual rated in both a 4 to 1 and 5 to 1 design factor.
- All components are alloy steel - Quenched & Tempered.
- Designed to be used at full WLL within angular loading range.
- 100% individually proof tested to 2.5 times the Working Load Limit with certification and Statistically Magnetic Particle inspected. (Can be furnished 100% Magnetic Particle inspected when requested at time of order.)
- Each product has a Product Identification Code (PIC) for material traceability along with a Working Load Limit and the name Crosby or "CG" stamped into it.
- 360° swivel and 180° pivot action.
- Fatigue rated to 20,000 cycles at 1.5 times the Working Load Limit.
- Individually packaged along with proper application instructions and warning information.
- Bolt is secured with E-clip, threads are grooved. This method allows for easy disassembly and assembly of hoist ring for thorough examination of all components. Replacement kits are available.
- Bolts are individually Proof Tested.
- Multiple bolt length available to meet specific application requirements.
- Zinc plated (yellow chromate) finish for increased corrosion protection.
- Meets or exceeds all the requirements of ASME B30.26 including identification, ductility, design factor, proof load and temperature requirements. Importantly, these hoist rings meet other critical performance requirements including fatigue life, impact properties and material traceability, not addressed by ASME B30.26.

Load Rated Fatigue Rated QT



LIFTING POINTS

HR-125



- Top washer has the following features:
  - The Working Load Limit and recommended torque value are permanently stamped into each washer.
  - Washer is color-coded for easy identification: Red - UNC thread.
- Individually Proof Tested to 2-1/2 times Working Load Limit.
- Bolt specification is an alloy socket head cap screw to ASTM A 574.
- All threads listed are UNC.
- BOLT SIZE IDENTIFICATION: The size of the bolt will be stated as in the drawing above. Illustration shows meaning of each dimension given.

HR-125 UNC Threads

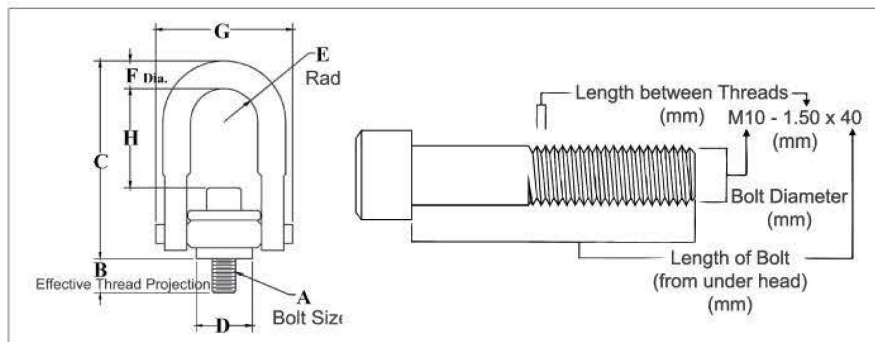
Frame Size No.	Stock No.	Working Load Limit (kg)	Torque (Nm)	Bolt Size A (in)	Dimensions (mm)							Weight Each (kg)
					Effective Thread Projection Length B	C	D	Radius E	Diameter F	G	H	
1 †	1016887	363	10	5/16 - 18 x 1.50	14.7	69.1	24.6	11.7	8.60	47.5	28.4	.17
1 †	1016898	454	16	3/8 - 16 x 1.50	14.7	69.1	24.6	11.7	8.60	47.5	26.7	.18
2	1016909	1134	38	1/2 - 13 x 2.00	17.8	123	49.8	22.1	19.0	85.1	58.2	1.06
2 †	1016912	1134	38	1/2 - 13 x 2.50	30.5	123	49.8	22.1	19.0	85.1	58.2	1.07
2	1016920	1814	81	5/8 - 11 x 2.00	17.8	123	49.8	22.1	19.0	85.1	54.9	1.09
2 †	1016924	1814	81	5/8 - 11 x 2.75	36.8	123	49.8	22.1	19.0	85.1	54.9	1.12
2	1016931	2268	136	3/4 - 10 x 2.25	24.1	123	49.8	22.1	19.0	85.1	51.8	1.14
2 †	1016935	2268	136	3/4 - 10 x 2.75	36.8	123	49.8	22.1	19.0	85.1	51.8	1.17
3	1016942	3175*	136	3/4 - 10 x 2.75	22.6	167	75.2	34.5	23.9	124	75.4	3.05
3 †	1016946	3175*	136	3/4 - 10 x 3.50	41.7	167	75.2	34.5	23.9	124	75.4	3.09
3	1016953	3629	217	7/8 - 9 x 2.75	22.6	167	75.2	34.5	23.9	124	72.1	3.10
3 †	1016957	3629	217	7/8 - 9 x 3.50	41.7	167	75.2	34.5	23.9	124	72.1	3.16
3	1016964	4536	312	1 - 8 x 3.00	29.0	167	75.2	34.5	23.9	124	69.1	3.22
3 †	1016969	4536	312	1 - 8 x 4.00	54.4	167	75.2	34.5	23.9	124	69.1	3.32
4	1016975	6804	637	1-1/4 - 7 x 4.50	56.1	221	94.2	44.5	30.2	157	99.8	6.58
5	1016986	10890	1085	1-1/2 - 6 x 6.75	3.0	315	120	60.7	44.5	215	143	17.1
5	1016997	13610	1491	2 - 4-1/2 x 6.75	3.0	315	120	60.7	44.5	215	131	18.5
6	1017001	22680	2847	2-1/2 - 4 x 8.0	102	429	146	76.2	57.2	279	204	39.9
7	1017005	34020	5830	3 - 4 x 10.5	127	495	184	95.3	69.9	360	216	75.3
8	1017009	45360	6915	3-1/2 - 4 x 13.0 #	178	561	197	102	82.6	404	236	120

5:1 Design Factor. \*4:1 Design Factor when tested in 90 degree orientation. †Long Bolts are designed to be used with soft metal (i.e., aluminum) workpiece. While the long bolts may also be used with ferrous metal (i.e., steel & iron) workpiece, short bolts are designed for ferrous workpieces only. Hex head bolt used on Frame 8 (100,000 lb) Hoist Ring.





HR-125M



LIFTING POINTS

- Top washer has the following features:
  - The Working Load Limit and recommended torque value are permanently stamped into each washer.
  - Washer is color-coded for easy identification: Silver - Metric thread.
- Individually Proof Tested to 2-1/2 times Working Load Limit.
- Bolt specification is a Grade 12.9 alloy socket head cap screw to DIN 912. All threads listed are metric (ASME B18.3.1m).
- Designed to be used with ferrous workpiece only.
- BOLT SIZE IDENTIFICATION: The size of the bolt will be stated as in the drawing above. Illustration shows meaning of each dimension given.

**HR-125M Metric Threads**

Frame Size No.	Stock No.	Working Load Limit (kg)			Torque (Nm)	Dimensions (mm)								Weight Each (kg)
		5:1 Design Factor †	4:1 Design Factor †			Bolt Size A	Effective Thread Projection Length B	C	D	Radius E	Diameter F	G	H	
1	1016602	400	500	10	M8X1.25X40	16.9	69.9	24.6	11.8	8.5	47.5	29.9	.17	
1	1016613	450	550	16	M10X1.50X40	16.9	69.9	24.6	11.8	8.5	47.5	28.1	.18	
2	1016624	1050	1300	38	M12X1.75X50	16.9	123	49.8	22.3	17.5	85.1	60.4	1.05	
2	1016635	1900	2400	81	M16X2.00X60	26.9	123	49.8	22.3	17.5	85.1	56.3	1.11	
2	1016644	2150	2700	136	M20X2.50X65	31.9	123	49.8	22.3	17.5	85.1	52.3	1.17	
3	1016657	3000	3750	136	M20X2.50X75	27.8	167	75.2	34.7	25.4	124	76.6	3.09	
3	1016668	4200	5250	312	M24X3.00X80	32.8	167	75.2	34.7	25.4	124	70.5	3.21	
4	1016679	7000	8750	637	M30X3.50X120	61.7	222	94.2	44.5	30.5	157	102	6.53	
5	1016690	11000	13750	1005	M36X4.00X150	54.0	318	120	60.7	44.5	215	142	16.8	
5	1016701	12500	15600	1005	M42X4.50X160	64.0	318	120	60.7	44.5	215	136	17.4	
5	1016712	13500	16900	1350	M48X5.00X160	74.0	318	120	60.7	44.5	215	130	18.0	

† Individually proof loaded to 2-1/2 times the Working Load Limit based on the 4:1 design factor.

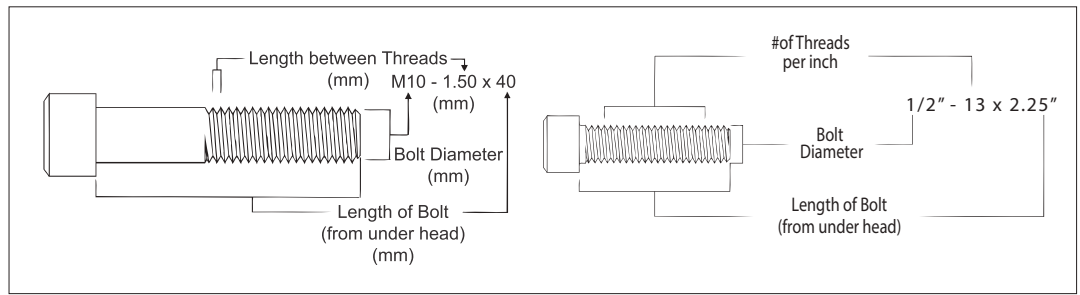




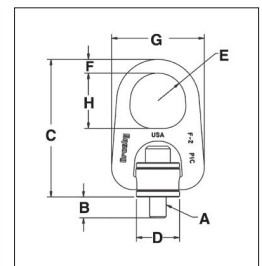
HR-1000



LIFTING POINTS



- Forged bail provides the following:
  - Easily readable raised lettering showing the name Crosby or "CG" and PIC for material traceability.
  - Greater durability providing the increased "Toughness" desired in potentially abusive field conditions.
  - Larger opening than standard hoist ring bail.
- Top washer is color-coded for easy identification (Red for UNC threads and Silver for Metric threads)
- The Working Load Limit and Recommended Torque value are permanently stamped into each washer.
- Individually Proof Tested to 2-1/2 times Working Load Limit.
- Available in both UNC thread and Metric thread style.
- UNC bolt specification is an alloy socket head cap screw to ASTM A 574. Metric bolt specification is a Grade 12.9 alloy socket head cap screw to DIN 912.
- BOLT SIZE IDENTIFICATION: The size of the bolt will be stated as in the drawing. Illustration shows meaning of each dimension given.



HR-1000 UNC Threads

Frame Size No.	Stock No.	Working Load Limit (kg)	Torque (Nm)	Bolt Size A (in)	Eff. Thread Projection Length B	Dimensions (mm)						Weight Each (kg)
						C	D	Radius E	F	G	H	
1	1068002	363	10	5/16 - 18 x 1.50	13.2	93.7	24.6	15.7	11.2	57.7	35.1	.27
1	1068006	454	16	3/8 - 16 x 1.50	13.2	93.7	24.6	15.7	11.2	57.7	35.1	.28
2	1068010	1134	38	1/2 - 13 x 2.25	17.5	159	49.8	31.8	.75	107	63.5	1.38
2 †	1068014	1134	38	1/2 - 13 x 2.75	30.2	159	49.8	31.8	.75	107	63.5	1.39
2	1068018	1814	81	5/8 - 11 x 2.25	17.5	159	49.8	31.8	.75	107	63.5	1.41
2 †	1068022	1814	81	5/8 - 11 x 3.00	36.6	159	49.8	31.8	.75	107	63.5	1.44
2	1068026	2268	136	3/4 - 10 x 2.50	23.9	159	49.8	31.8	.75	107	63.5	1.47
2 †	1068030	2268	136	3/4 - 10 x 3.00	36.6	159	49.8	31.8	.75	107	63.5	1.50
3	1068034	3175*	136	3/4 - 10 x 3.00	21.6	220	75.2	41.4	25.4	159	82.6	4.58
3 †	1068038	3175*	136	3/4 - 10 x 3.50	34.3	220	75.2	41.4	25.4	159	82.6	4.63
3	1068042	3629	217	7/8 - 9 x 3.00	21.6	220	75.2	41.4	25.4	158	82.6	4.63
3 †	1068046	3629	217	7/8 - 9 x 3.50	34.3	220	75.2	41.4	25.4	158	82.6	4.71
3	1068050	4536	312	1 - 8 x 3.50	34.3	220	75.2	41.4	25.4	158	82.6	4.76
3 †	1068054	4536	312	1 - 8 x 4.50	59.7	220	75.2	41.4	25.4	158	82.6	4.86
4	1068058	6804	637	1-1/4 - 7 x 5.00	53.1	285	94.2	50.8	31.8	199	102	9.93
4	1068062	10890	1085	1-1/2 - 6 x 5.50	65.8	285	94.2	50.8	36.6	199	102	10.4

5:1 Design Factor. \*4.5:1 Design Factor when tested in 90 degree orientation. †Long Bolts are designed to be used with soft metal (i.e., aluminum) workpiece.

HR-1000M Metric Threads

Frame Size No.	Stock No.	Working Load Limit (kg)			Torque Nm	Bolt Size A	Eff. Thread Projection Length B	Dimensions (mm)						Weight Each (kg)
		5:1 Design Factor*	4:1 Design Factor*					C	D	Radius E	F	G	H	
1	1068307	400	500	10	M8 x 1.25 x 40	15.2	93.7	24.6	15.7	11.2	57.7	35.1	0.3	
1	1068316	450	550	16	M10 x 1.50 x 40	15.2	93.7	24.6	15.7	11.2	57.7	35.1	0.3	
2	1068325	1050	1300	38	M12 x 1.75 x 55	15.5	162	49.8	31.8	19.1	107	63.5	1.5	
2	1068334	1900	2400	81	M16 x 2.00 x 65	25.5	162	49.8	31.8	19.1	107	63.5	1.5	
2	1068343	2150	2700	136	M20 x 2.50 x 70	30.5	162	49.8	31.8	19.1	107	63.5	1.6	
3	1068352	3000	3750	136	M20 x 2.50 x 80	25.4	220	75.2	41.4	25.4	159	82.6	4.6	
3	1068361	4200	5250	312	M24 x 3.00 x 90	35.4	220	75.2	41.4	25.4	159	82.6	4.8	
4	1068370	7000	8750	637	M30 x 3.50 x 140	66.2	285	94.2	50.8	31.8	199	102	9.7	
4	1068389	11000	13750	1005	M36 x 4.00 x 130	56.2	285	94.2	50.8	31.8	199	102	10.2	

\*Individually proof loaded to 2-1/2 times the Working Load Limit based on the 4:1 Design Factor.



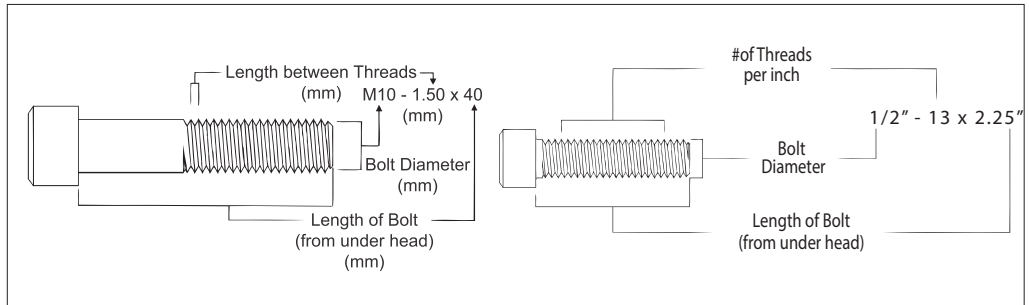
APPLICATION AND WARNING INFORMATION SECTION 17





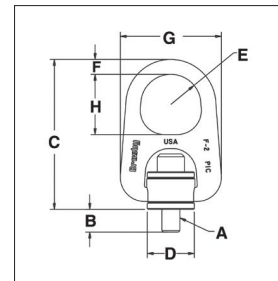


HR-1000CT



LIFTING POINTS

- All load bearing components are heat treated, Quenched & Tempered alloy steel.
- All components, with the exception of the retaining ring, are produced with maximum material hardness of 34 HRC.
- All primary load-bearing components have Charpy impact testing. The body, bushing, washer and bail meet impact requirements of 42-joule min. avg. at -20°C. The bolt meets impact requirements of 27-joule min. avg. at -100°C.
- Individually magnetic particle inspected with certification.
- Forged bail provides the following:
  - Easily readable raised lettering showing the name Crosby or "CG" and PIC for material traceability.
  - Greater durability providing the increased toughness desired in potentially abusive field conditions.
  - Larger opening than standard hoist ring bail.
- Bolt specification is an alloy socket head cap screw to ASTM A320 Grade L7 or L43.
- Top washer is color-coded for easy identification (blue for UN threads and grey for Metric threads).
- The Working Load Limit and recommended torque value are permanently stamped into each washer.
- Individually Proof Tested to 2 times Working Load Limit (90° and in-line).
- BOLT SIZE IDENTIFICATION: The size of the bolt will be stated as in the drawing above. Illustration shows meaning of each dimension given.
- Type approval and certification in accordance with DNV Offshore Standard DNV-OS-E101, Drilling Plant, Standard for Certification DNVGL-ST-0378, Lifting Appliances, and DNVGL-SI-0166.
- Individually serialized.
- 100% MPI all primary load bearing components.
- Coating: Thermo-diffusion galvanized.
- Optional bolt sizes available upon request.



HR-1000CT UNC Threads

Frame Size No.	Stock No.	Working Load Limit (kg)	Torque (Nm)	Bolt Size A (in)	Dimensions (mm)								Mass Each (kg)
					Effective Thread Projection Length B	C	D	Radius E	Diameter F	G	H		
2	6608103	862	38	1/2 - 13 x 2.25	17.8	161	49.8	31.8	19.1	107	63.5	3	
2	6608112	862	38	1/2 - 13 x 2.75	30.5	161	49.8	31.8	19.1	107	63.5	3	
2	6608121	1361	81	5/8 - 11 x 2.25	17.8	161	49.8	31.8	19.1	107	63.5	3	
3	6608130	2177	136	3/4 - 10 x 3.00	21.6	218	75.2	41.4	25.4	159	82.6	11	
3	6608139	2812	217	7/8 - 9 x 3.00	21.6	218	75.2	41.4	25.4	159	82.6	11	
3	6608148	3765	312	1 - 8 x 3.50	34.3	218	75.2	41.4	25.4	159	82.6	11	
4	6608149	5670	637	1-1/4 - 7 x 5.00	53.3	287	94.2	50.8	36.6	207	102	24	
4	6607669	9072	1085	1-1/2 - 6 x 5.50	66.0	287	94.2	50.8	36.6	207	102	27	
4	6607727	9072	1085	1-1/2 - 8 x 5.50	66.0	287	94.2	50.8	36.6	207	102	27	
5	6607670	12701	1491	2 - 4.5 x 7.50	81.3	385	102	68.3	44.5	296	127	69	
6	6607671	20412	2847	2 1/2 - 4 x 9.50	94.7	506	146	76.2	69.9	368	143	157	

5:1 Design Factor.

Load Rated

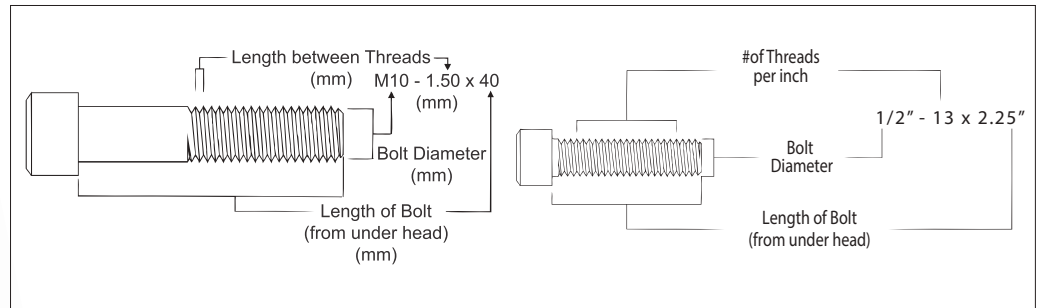
Fatigue Rated

APPLICATION AND WARNING INFORMATION SECTION 17

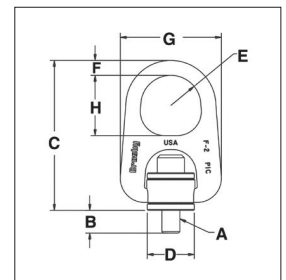


LIFTING POINTS

HR-1000MCT



- All load bearing components are heat treated, Quenched & Tempered alloy steel.
- All components, with the exception of the retaining ring, are produced with maximum material hardness of 34 HRC.
- All primary load-bearing components have Charpy impact testing. The body, bushing, washer and bail meet impact requirements of 42-joule min. avg. at -20°C. The bolt meets impact requirements of 27-joule min. avg. at -100°C.
- Individually magnetic particle inspected with certification.
- Forged bail provides the following:
  - Easily readable raised lettering showing the name Crosby or "CG" and PIC Code for material traceability.
  - Greater durability providing the increased toughness desired in potentially abusive field conditions.
  - Larger opening than standard hoist ring bail.
- Bolt specification is an alloy socket head cap screw to ASTM A320 Grade L7 or L43.
- Top washer is color-coded for easy identification (blue for UN threads and grey for Metric threads).
- The Working Load Limit and recommended torque value are permanently stamped into each washer.
- Individually Proof Tested to 2 times Working Load Limit (90° and in-line).
- BOLT SIZE IDENTIFICATION: The size of the bolt will be stated as in the drawing above. Illustration shows meaning of each dimension given.
- Type approval and certification in accordance with DNV Offshore Standard DNV-OS-E101, Drilling Plant, Standard for Certification DNVGL-ST-0378, Lifting Appliances, and DNVGL-SI-0166.
- Individually serialized.
- 100% MPI all primary load bearing components.
- Coating: Thermo-diffusion galvanized.
- Optional bolt sizes available upon request.



11

HR-1000MCT Metric Threads

Frame Size No.	Stock No.	Working Load Limit (kg)		Torque (Nm)	Dimensions (mm)									Mass Each (kg)
		Design Factor 5:1	Design Factor 4:1		Bolt Size A	Eff. Thread Projection Length B	C	D	Radius E	Diameter F	G	H		
2	6630058	825	1,030	38	M12 x 1.75 x 55	15.6	160.6	49.7	31.8	19.1	106.7	63.5	1	
2	6630059	1,350	1,690	81	M16 x 2.00 x 65	25.5	160.6	49.7	31.8	19.1	106.7	63.5	1	
3	6630060	2,250	2,810	136	M20 x 2.50 x 80	25.3	218.2	75.1	41.4	25.4	158.8	82.6	5	
3	6630061	3,175	3,970	312	M24 x 3.00 x 90	35.4	218.2	75.1	41.4	25.4	158.8	82.6	5	
4	6630062	5,450	6,810	637	M30 x 3.50 x 140	65.9	287.3	94.1	50.8	36.6	206.5	101.6	11	
4	6630063	7,450	9,310	1,005	M36 x 4.00 x 130	56.3	287.3	94.1	50.8	36.6	206.5	101.6	12	
5	6630064	13,250	16,560	1,350	M48 x 5.00 x 180	70.7	384.9	101.6	68.3	44.5	295.6	127.0	30	

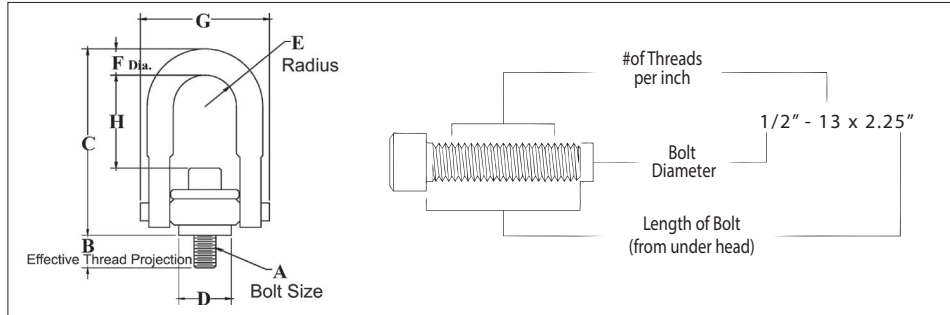
5:1 Design Factor.

Load Tested Fatigue Tested

APPLICATION AND WARNING INFORMATION SECTION 17



SS-125UNC



LIFTING POINTS

- All components are 316 stainless steel, except bolt retainers, which are made from 15-7 PH (UNS 15700) magnetic stainless steel.
- Rated at 100 percent at 90 degree angle.
- Each product has a Product Identification Code (PIC) for material traceability, along with the Working Load Limit and the name Crosby or "CG" stamped into it.
- Individually proof tested to 2 times the Working Load Limit with certification.
- Fatigue Rated to 20,000 cycles at 1-1/2 times the Working Load Limit.
- Washer is color-coded for easy identification (Red - UNC thread).
- Bolt specification is 316 stainless steel socket head cap screw to ASTM F837 Group 1 (316).
- BOLT SIZE IDENTIFICATION: The size of the bolt will be stated as in the drawing above. Illustration shows meaning of each dimension given.

SS-125UNC Threads

Frame Size No.	Stock No.	Working Load Limit (kg)	Torque (ft-lb)	Bolt Size A (in)	Dimensions (in)								Weight Each (lb)
					Effective Thread Projection Length B	C	D	Radius E	Diameter F	G	H		
1	1065000	181	4.7	5/16 - 18 x 1.0	.29	2.67	.71	.43	.34	1.84	1.27	.30	
1	1065004	181	4.7	5/16 - 18 x 1.25	.54	2.67	.71	.43	.34	1.84	1.27	.30	
1	1065008	227	8	3/8 - 16 x 1.25	.54	2.67	.71	.43	.34	1.84	1.27	.30	
2	1065016	567	19	1/2 - 13 x 2.0	.78	4.78	1.45	.88	.69	3.52	2.31	2.6	
2	1065020	567	19	1/2 - 13 x 2.25	1.03	4.78	1.45	.88	.69	3.52	2.31	2.6	
2	1065024	567	19	1/2 - 13 x 2.5	1.28	4.78	1.45	.88	.69	3.52	2.31	2.6	
2	1065028	907	41	5/8 - 11 x 2.0	.78	4.78	1.45	.88	.69	3.52	2.18	2.6	
2	1065032	907	41	5/8 - 11 x 2.25	1.03	4.78	1.45	.88	.69	3.52	2.18	2.6	
2	1065036	907	41	5/8 - 11 x 2.5	1.28	4.78	1.45	.88	.69	3.52	2.18	2.6	
2	1065040	1134	68	3/4 - 10 x 2.25	1.03	4.78	1.45	.88	.69	3.52	2.06	3.0	
2	1065044	1134	68	3/4 - 10 x 2.75	1.53	4.78	1.45	.88	.69	3.52	2.06	3.0	
3	1065048	1588	68	3/4 - 10 x 2.75	1.04	6.52	2.20	1.40	.94	5.14	3.06	7.0	
3	1065052	1588	68	3/4 - 10 x 3.25	1.54	6.52	2.20	1.40	.94	5.14	3.06	7.0	
3	1065056	1814	108	7/8 - 9 x 2.75	1.04	6.52	2.20	1.40	.94	5.14	2.93	7.0	
3	1065060	1814	108	7/8 - 9 x 3.0	1.29	6.52	2.20	1.40	.94	5.14	2.93	7.0	
3	1065064		115	1 - 8 x 3.0	1.29	6.52	2.20	1.40	.94	5.14	2.81	7.5	
3	1065068	2268	156	1 - 8 x 3.25	1.54	6.52	2.20	1.40	.94	5.14	2.81	7.5	
3	1065072	2268	156	1 - 8 x 4.0	2.29	6.52	2.20	1.40	.94	5.14	2.81	7.5	
4	1065080	2268	156	1-1/4 - 7 x 4.0	1.89	8.73	3.19	1.75	1.25	6.50	4.12	14.0	
5	1065084	3402	319	1-1/2 - 6 x 5.5	2.70	12.47	4.87	2.25	1.75	8.55	6.41	34.0	
5	1065088	5443	542	2 - 4.5 x 5.75	2.96	12.47	4.87	2.25	1.75	8.55	5.91	36.0	
6	1065092	6804	746	2-1/2 - 4 x 8.0	4.00	16.87	6.52	3.00	2.25	11.67	8.03	88.0	
6	1065096	11340	1424	2-1/2 - 8 x 8.0	4.00	16.87	6.52	3.00	2.25	11.67	8.03	88.0	
7	1065100	11340	1424	3 - 4 x 10.25	5.00	19.50	8.10	3.75	2.75	14.15	8.48	166.0	
8	1065104	17010	2915	3-1/2 - 4 x 13	7.00	22.09	8.60	4.00	3.25	15.90	9.28	265.0	

5:1 Design Factor.

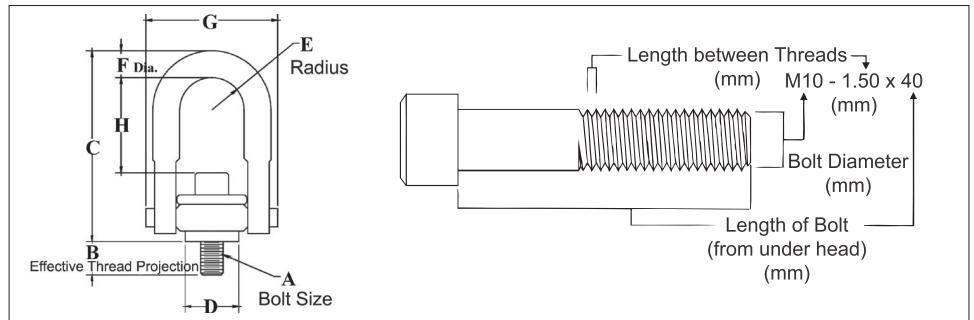
Load Rated Fatigue Rated

APPLICATION AND WARNING INFORMATION SECTION 17



LIFTING POINTS

SS-125M



- All components are 316 stainless steel, except bolt retainers, which are made from 15-7 PH (UNS 15700) magnetic stainless steel.
- Rated at 100 percent at 90 degree angle.
- Each product has a Product Identification Code (PIC) for material traceability, along with the Working Load Limit and the name Crosby or "CG" stamped into it.
- Individually proof tested to 2 times the Working Load Limit with certification.
- Fatigue Rated to 20,000 cycles at 1-1/2 times the Working Load Limit.
- Washer is color-coded for easy identification (Silver - Metric thread)).
- Bolt specification is 316 stainless steel socket head cap screw to ASTM F 837M (316).
- BOLT SIZE IDENTIFICATION: The size of the bolt will be stated as in the drawing above. Illustration shows meaning of each dimension given.

SS-125M Metric Threads

Frame Size No.	Stock No.	Working Load Limit (kg)	Torque (Nm)	Dimensions (mm)								Weight Each (kg)
				Bolt Size A	Effective Thread Projection Length B	C	D	Radius E	Diameter F	G	H	
1	1065203	200	4	M8 x 1.25	13	68	21.6	11	8.5	47	32	.17
1	1065207	250	8	M10 x 1.50	18	68	21.6	11	8.5	47	30	.17
2	1065211	525	18	M12 x 1.75	19	121	37	22	17.5	89	60	1.1
2	1065215	950	40	M16 x 2.00	29	121	37	22	17.5	89	56	1.1
2	1065219	1075	68	M20 x 2.50	34	121	37	22	17.5	89	52	1.2
3	1065223	1500	68	M20 x 2.50	32	166	56	36	25	131	78	3.0
3	1065227	2100	108	M24 x 3.00	37	166	56	36	25	131	74	3.1
3	1065231	2100	108	M30 x 3.50	58	206	56	36	25	131	108	3.1
4	1065235	3500	318	M30 x 3.50	42	222	81	45	31	165	106	6.3
4	1065239	3500	318	M30 x 3.50	62	222	81	45	31	165	106	6.4
5	1065243	5500	542	M36 x 4.00	64	317	124	57	43	217	166	15.5
5	1065247	6250	542	M42 x 4.50	82	317	124	57	43	217	160	16.0
5	1065251	6750	542	M48 x 5.00	82	317	124	57	43	217	154	16.8
6	1065255	11150	1423	M64 x 6.00	101	428	165	76	56	296	204	39.0
7	1065259	15750	2915	M72 x 6.00	132	495	206	95	69	359	220	74.0
8	1065263	22300	3459	M90 x 6.00	177	561	216	102	83	404	235	118.0

5:1 Design Factor

Load Rated

Fatigue Rated

APPLICATION AND WARNING INFORMATION SECTION 17

11